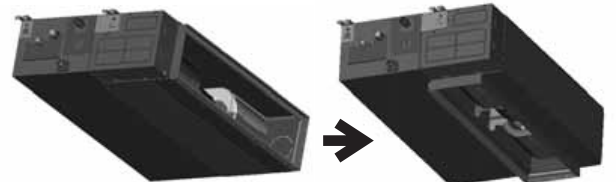


- Low silhouette (27 cm).
- Condensate pump.
- Outside air entry.
- Back or down configurable intake air (default).
- DC Inverter fan motor.
- Adjustment of static pressure from the indoor unit
- electronic board.
- Only two connecting cables.
- Special port for filling water and test the pump.
- Removable electric box.
- 4 speed fan motor.
- Wired control included.
- Optional remote control.
- LED display for easy trouble shooting.
- Alarm signal.
- ON/OFF switch connection.



Two air intake options: bottom or rear


 Wired control included  
 Optional remote control


LED display for trouble shooting

**SUPER<sup>DC</sup>**  
**INVERTER**

**ENERGETIC EFFICIENCY CLASS "A+++"**

**8°C heating control**

Maintain the room temperature steadily at 8°C and prevent the room from freezing by heating operation when nobody is at home for long in severe weather.


**2 ambient sensor**

Indoor ambient temperature can be sensed more accurately.


**3 sleep modes**

Common, Default, User-defined

**Mode 1:** Indoor temperature automatically rises (when cooling) or drops (when heating).

**Mode 2:** Featuring unique function, the temperature is automatically adjusted to be a little lower before you wake up.

**Mode 3:** You could program your own sleep curve under DIY mode.

**Smart zone controller**

Possibility to control several units simultaneously from only one remote controller. The smart zone controller can directly control up to 16 indoor units (optional)


**7 fan speeds**

From Super low to Turbo, choose desired fan speed.


**Turbo Operation**

With this function, the air conditioner will maximize the output of cooling or heating capacity, make the room cool down or heat up rapidly, and attain the desired temperature in the shortest time.


**Low Ambient Cooling**

The air conditioner with a special built-in Low Ambient Kit can be used in temperature as low as -15°C for cooling and heating operation.


**Memory /Auto-restart function**

If the air conditioner breaks off unexpectedly due to the power cut, it will restart with the previous function setting automatically when the power resumes.


**Low temperature dehumidity**

It works under the dehumidification mode even if the temperature is lower than 12°C


**Filter "DustProof"**

Eliminate formaldehyde and other volatile organic compounds (VOCs) as well as harmful gases and odors.


**Gate card system**

Available at a preset port in PCB for the gate card system to be set and connected to this port and work with this function.


**2 Wired controllers for 1 unit**

Wall or remote control (optional)


**0.33W Standby**

Intelligent on-off technology enables products automatically enter energy-saving mode when standby, cut energy consumption from normal 4-5W to 0.33W which counts 90% of Memory / Auto-restart saving.


**Timer function**

The timer can be set to start and stop at any point in a 24-hour period.


**Trouble shooting**

Error codes are displayed in the indoor panel and wall control.


**High efficiency digital PFC control**

1% efficiency increased


**180°C Sine wave inverter technology**

Energy saving

**TECHNICAL SPECIFICATIONS**

MODEL		MBCCN18	MBCCN24	MBCCN36	MBCCN48
Cooling capacity	Btu/Hr	18000	24000	36000	48000
Cool - Pdesignc	kW	5.3	7.0	10.5	14.0
Cool - SEER	W/W	6.1	6.1	6.1	6.1
Cool - Energy Efficiency Class		A++	A++	A++	A++
Input	W	1035	1745	3010	4270
Rated Current	A	7.32	8.65	13.50	12.00
Heating capacity	Btu/Hr	19000	24000	38000	55000
Heat - Pdesignh	kW	5.0	5.6	10.9	11.6
Heat - SCOP	W/W	5.1	5.1	5.1	5.1
Heat - Energy Efficiency Class		A+++	A+++	A+++	A+++
Power supply Id	V-Ph-Hz	220~240-1-50	220~240-1-50	220~240-1-50	220~240-1-50
Power supply Od	V-Ph-Hz	220~240-1-50	220~240-1-50	220~240-1-50	380~415-3-50
Standby rating	W	1.0	1.0	1.0	1.0
<b>INDOOR UNIT</b>					
Air flow volume	m3/h	1050/900/780	1360/1200/970	1750/1500/1280	2200/1900/1600
Noise pres. Level	dB(A)	44/40/37	46/42/38	46/43/40	50/47/44
Dimension (WxDxH)	mm	920x635x270	920x635x270	1200x865x300	1200x865x300
Net weight	Kg	26.9	28.0	45.0	43.2
Drain Pipe Dia	mm	ODΦ25	ODΦ25	ODΦ25	ODΦ25
<b>OUTDOOR UNIT</b>					
Air Flow volume	m3/h	2200.0	2700.0	5000.0	7000.0
Noise pres. level	dB(A)	53.0	63.0	63.0	66.0
Dimension (WxDxH)	mm	810x310x558	845x320x700	945x395x810	938x392x1369
Net weight	Kg	38.0	48.0	69.3	97.1
Outer Diameter Connection Pipe	mm inch	Φ6.35/Φ12.7 1/4"/1/2"	Φ9.52/Φ15.9 3/8"/5/8"	Φ9.52/Φ15.9 3/8"/5/8"	Φ9.52/Φ15.9 3/8"/5/8"
Refrigerant	Type	R410A	R410A	R410A	R410A
Refrig. Charge	Kg	1.83	1.95	3.65	3.80

\* The above design and specifications are subject to change of product improvement without prior notice.



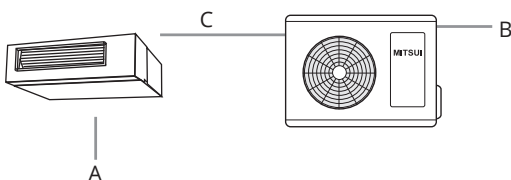
Wired control included  
Optional remote control



LED display for trouble shooting

**DATA PRE-INSTALLATION**

MODEL	Unit	Supply			Interconnect.
		Phases	Indoor A	Outdoor B	Control C
MBCCN-18-H3	IND/OUT	SINGLE/SINGLE	3x1	3x1.5	2x0.75
MBCCN-24-H3	IND/OUT	SINGLE/SINGLE	3x1	3x2.5	2x0.75
MBCCN-36-H3	IND/OUT	SINGLE/SINGLE	3x1	3x2.5	2x0.75
MBCCN-48-H3	IND/OUT	SINGLE/SINGLE	3x1	3x6	2x0.75


**MAXIMUM HEIGHT OF INSTALLATION (m)**

MODEL	Tube		Max. Distance		Additional charge (g/m)	Pre-charge up to (m)
	Gas	Liquid	A	B		
MBCCN-18-H3	1/2	1/4	15	20	30	7.5
MBCCN-24-H3	5/8	3/8	15	30	60	7.5
MBCCN-36-H3	5/8	3/8	30	50	60	7.5
MBCCN-48-H3	5/8	3/8	30	50	60	9.5

